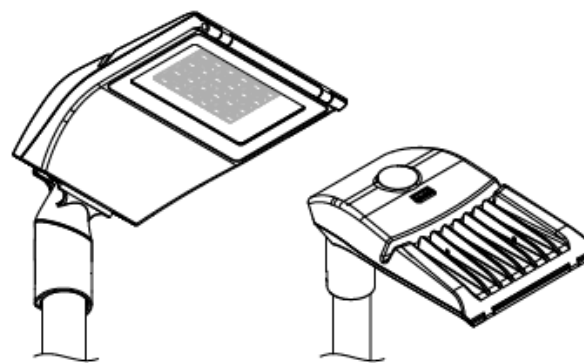


MISTRAL

Installation Instructions

MISTRAL SMALL

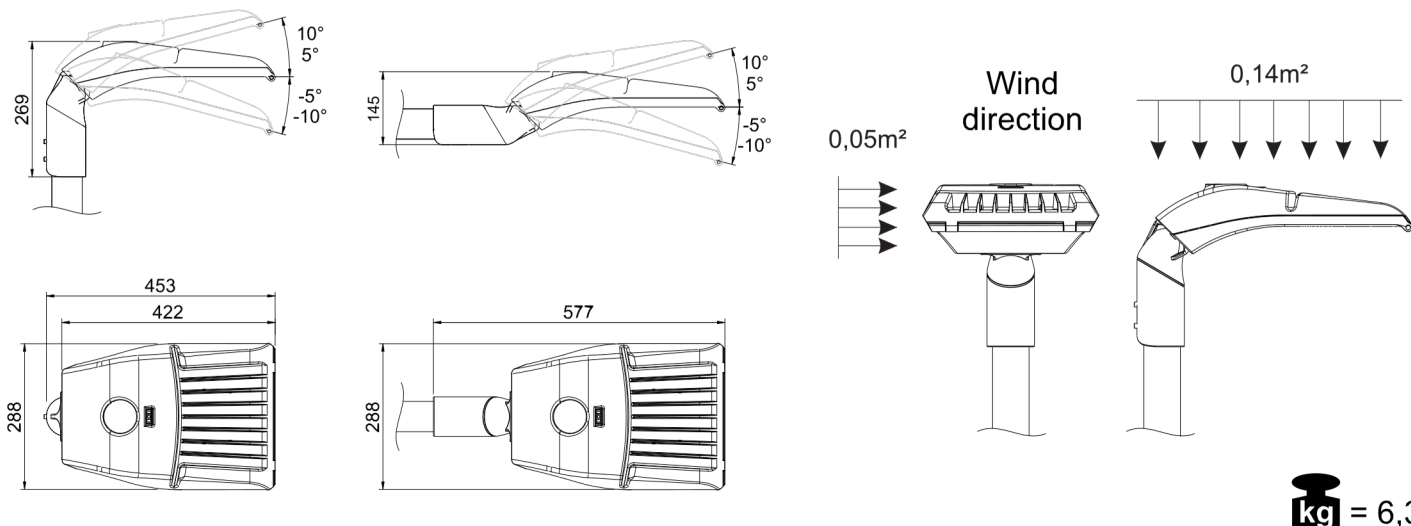


V0

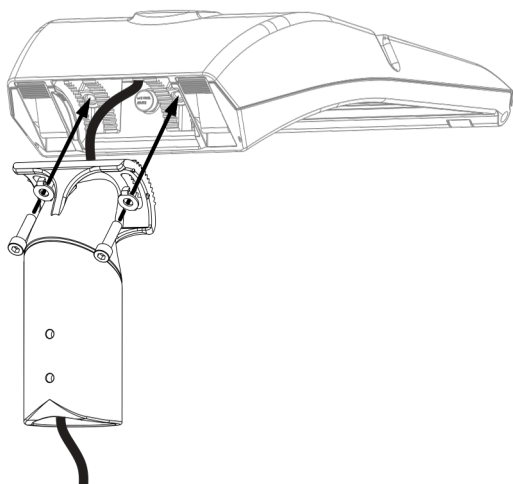


Complies with the WEEE regulations.

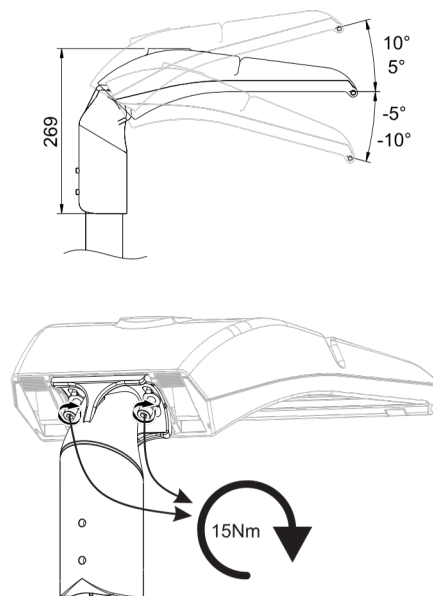
i

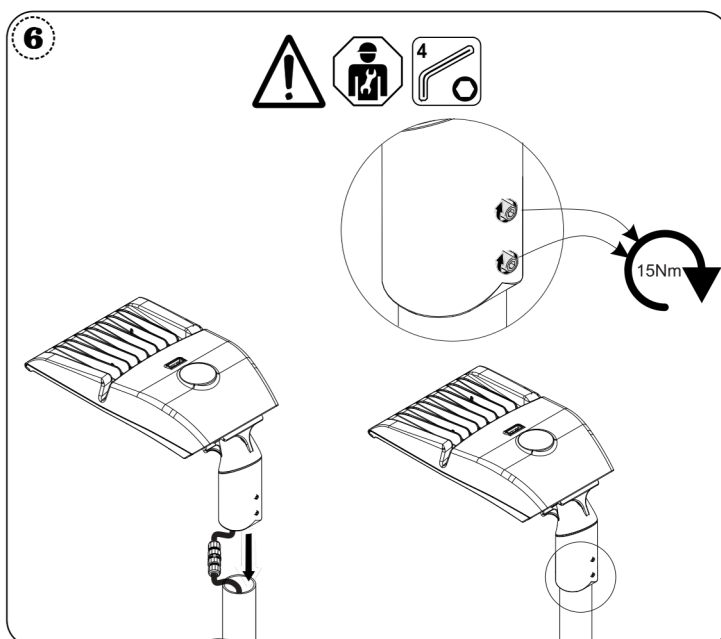
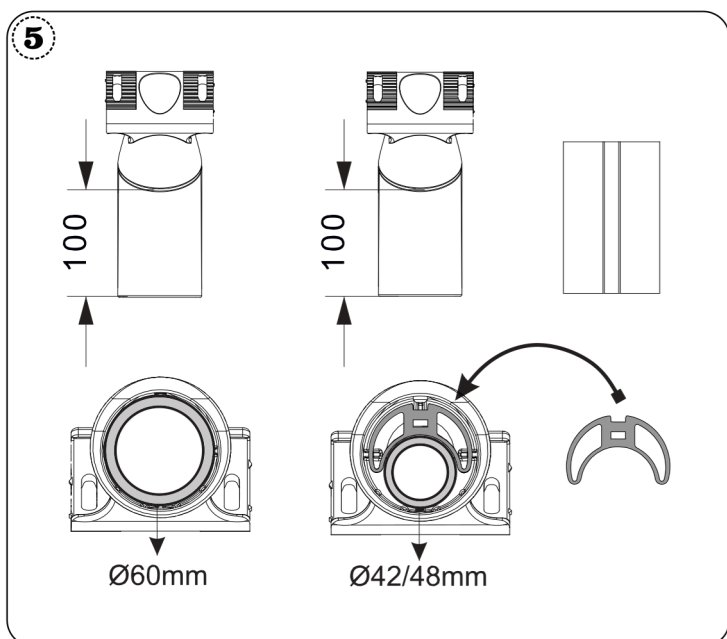
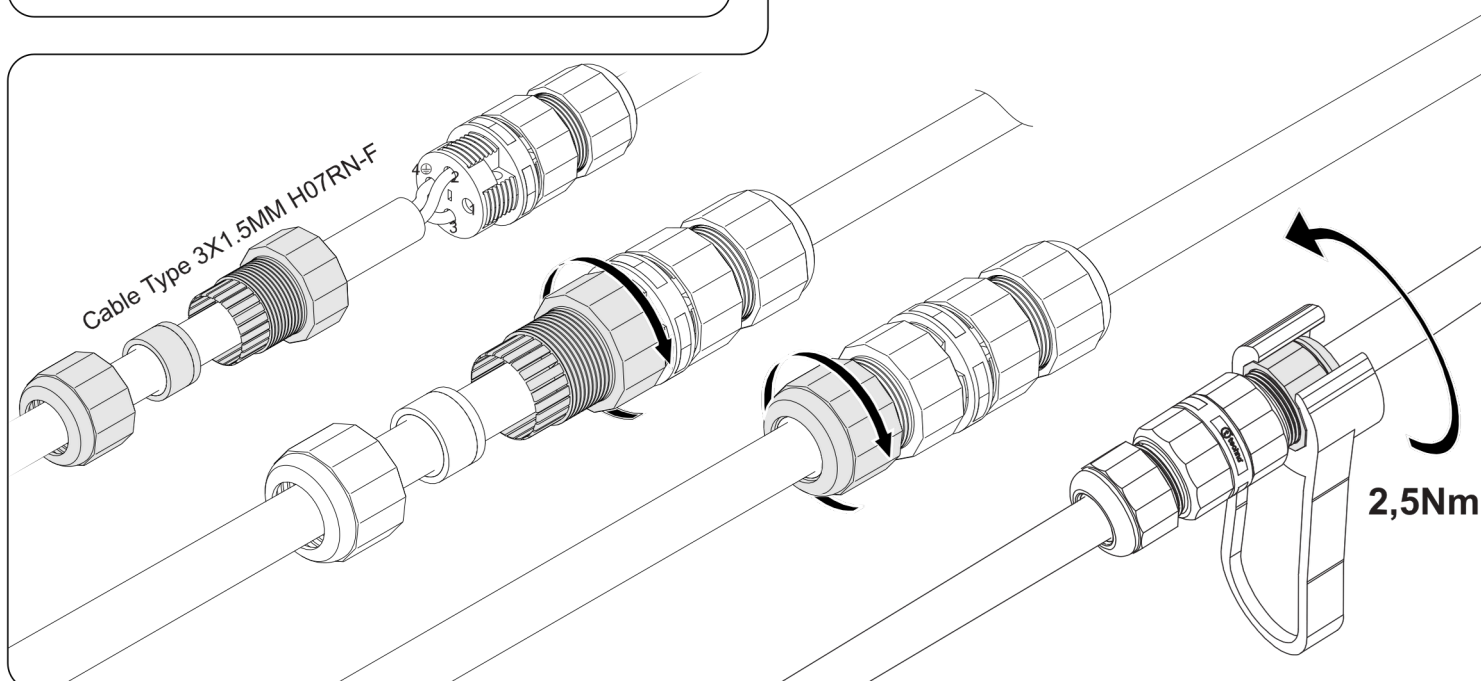
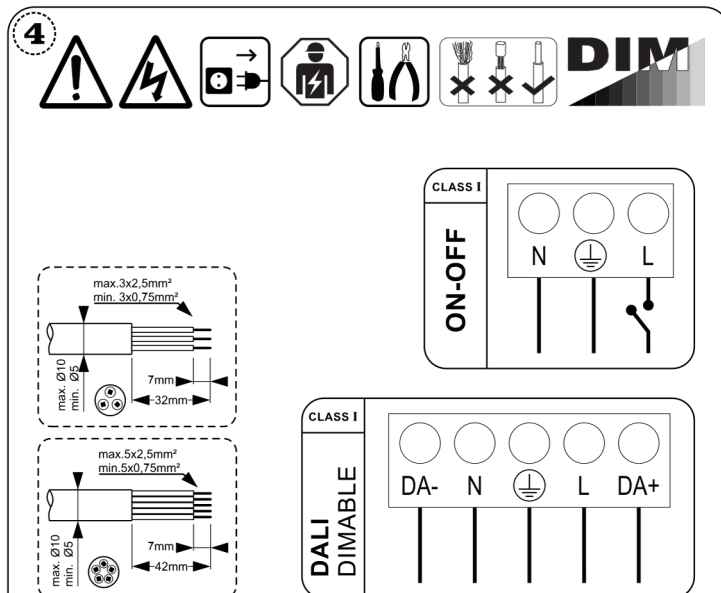
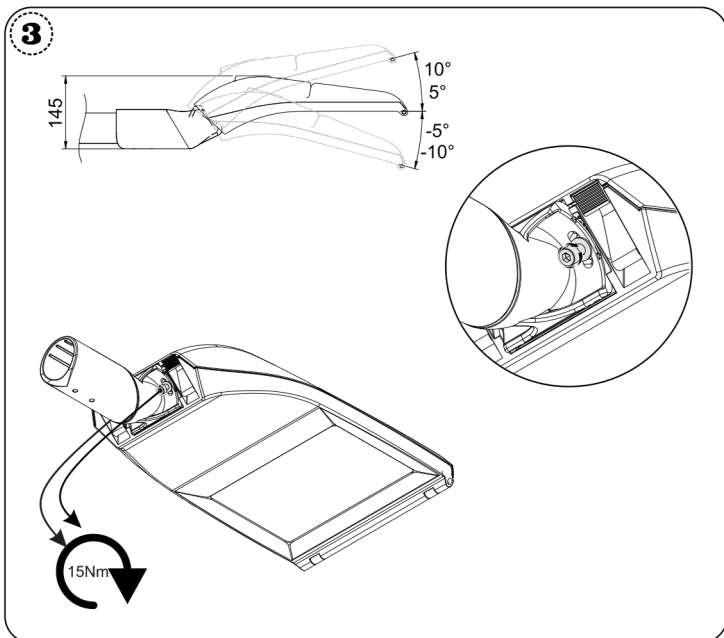


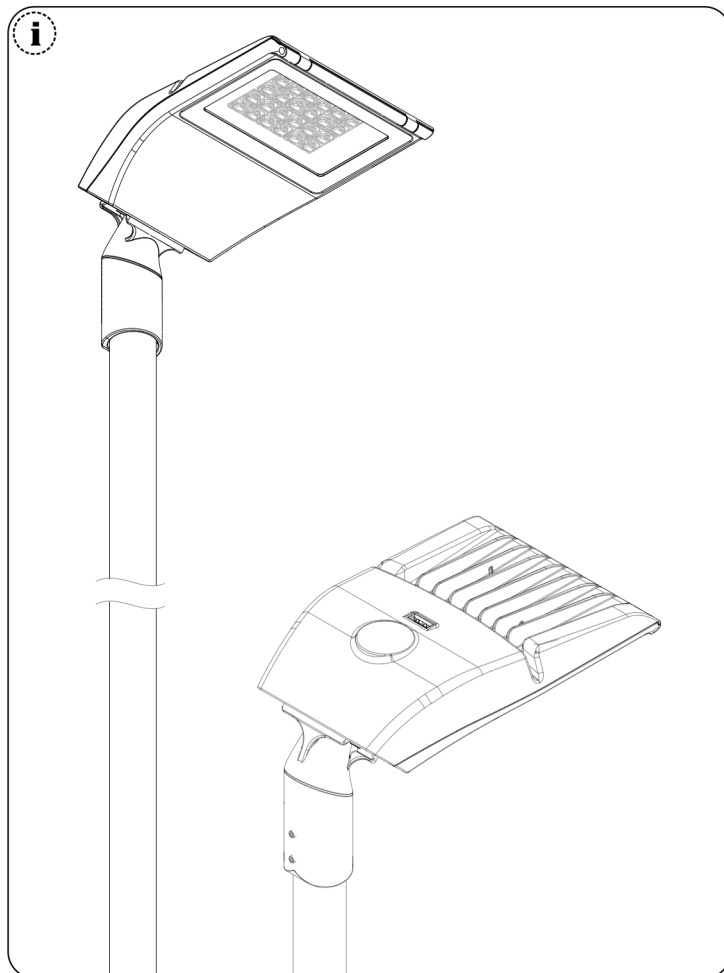
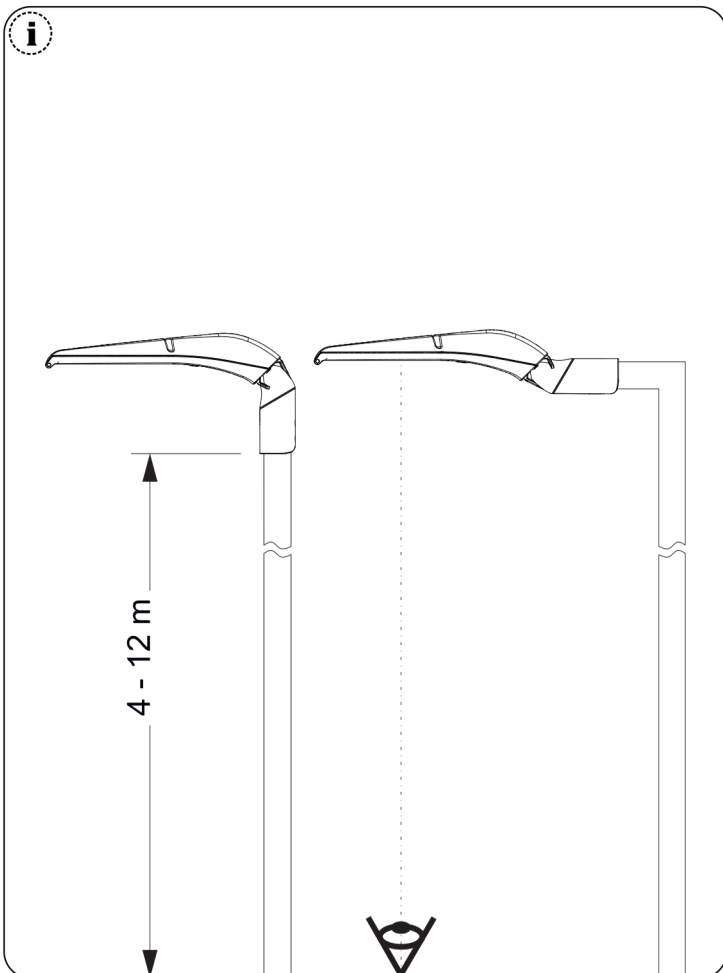
1



2







ATTENTION

- The type of supply cord to be used with this lighting fixture; "H05RR-F / H03VVH2-F / H03VV-F" and external insulation nominal diameter area should be at least 5mm and at most 12mm.
- In case the external twisted cable or cord of this lighting fixture is damaged; To avoid a hazard, it must only be replaced by the manufacturer or its authorized service or equally qualified personnel.
- The light source of this luminaire is not replaceable; when the light source reaches its end of life whole luminaire shall be replaced.
- Lighting fixture should be positioned so that prolonged direct looking into the luminaire from a distance of less than 2.5 m is not expected.