



Custom Made

Demonstrating the possibilities of Custom Made.

Contents

Clicking on the relevant page will direct you to the corresponding page in the guide.

Rating Scale	<u>03</u>
Avenue Metro	<u>05</u>
Cascade Flex	<u>06</u>
Foil	<u>07</u>
Mirage 3	<u>08</u>
Scribe	<u>09</u>
Selene 2	<u>10</u>
The Process	<u>12</u>

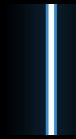
Rating Scale

To help you navigate the customisation journey, we've introduced a three-tier implementation rating system: blue, yellow, and red.

Within the scale, we factor in:

- Technical complexity
- Timeline considerations
- Financial limitations

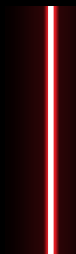
We apply this criteria to every Custom Made change on a per-product basis.



Simple changes. Indicates that the project is straightforward and can be implemented in a short amount of time.



Moderate changes. The project presents some complexities and may require additional planning, time and resource. There could be some unknown variables that need to be addressed during implementation.



Complex changes. The project is significantly complex and challenging. It may involve research and development or the need for specialised expertise. Implementation will require a substantial investment of time and resource.

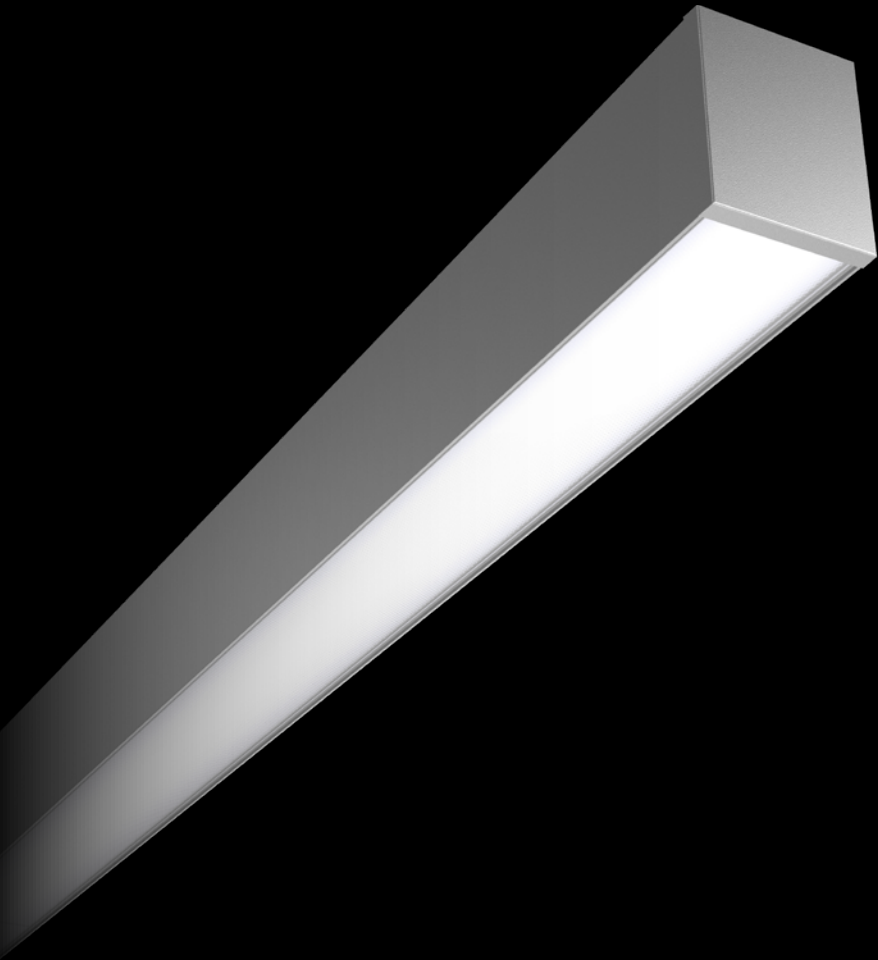


Case Study
Read More

The Featherstone Building

Avenue Metro

Avenue Metro takes design and technology to new heights. The slim body creates a sense of space and drama, whilst continuous lines of light trace the contours of the building, complementing every interior design.



- Body colour changes



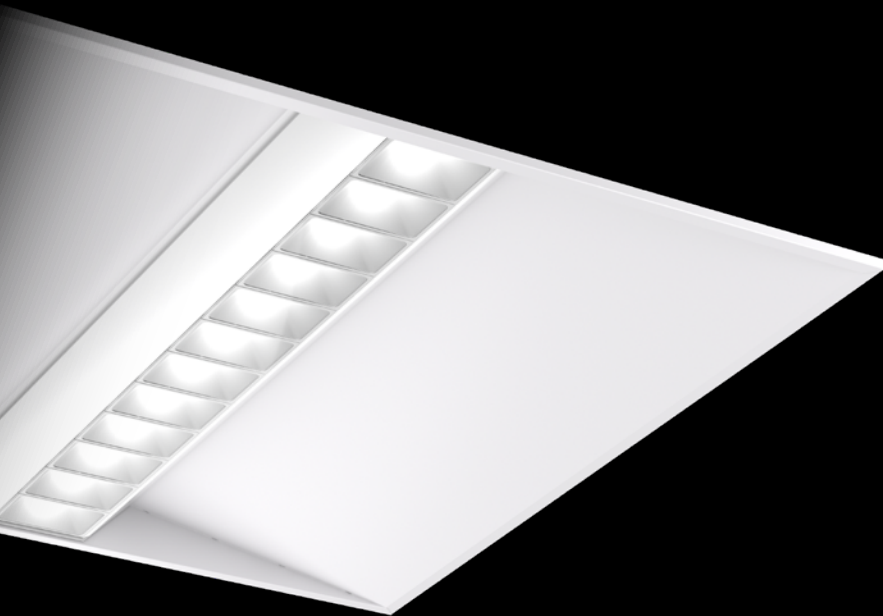
- Length changes in 250mm increments (up to 3m)
- Additional emergency variants (e.g., central battery)
- Additional controls integration (e.g., Casambi)
- Diffuser optic changes (e.g., quad, hex, nano hex)
- Uplight, downlight split change
- Bespoke angles corners
- Mounting options (e.g., wall mounting)



- Alternative widths
- Alternative depths
- IP54 rating
- Extendable variants – For precise ceiling mounting
- Extended hexaprism diffuser (+1500mm)

Cascade Flex

Designed with a sustainable approach the Cascade Flex is a new generation of cross-sector recessed luminaire.



- 1200 x 300 mm and 1200 x 600 mm – Exposed tee ceiling integration
- 600 x 600 mm ceiling integration; no product dimensional changes



- Emergency lighting variants (e.g., Comet / Central battery)
- Additional controls integration (e.g., Casambi)



- Alternative sized 600 x 600 mm version, e.g., 500 x 500 mm
- Pod colour change (e.g., black pod in white body)

Foil

A market-leading lighting solution incorporating acoustic control, reimaged for Education & Workspace. With a 28% reduction in embodied carbon, it sets new environmental standards.



- Holes for ancillaries less than 190mm diameter (e.g., fire detectors, sprinklers, surface mount sensors)
- Acoustic material colour changes
- Alternative body colours
- Integration of Air Control wireless module



- Infill length changes
- Product length changes
- Diffuser optic changes
- Integrated sensor changes in same location as the Organic Response sensor
- Supply as an assembled product



- Foil Width changes
- Optic Width changes

Mirage 3

Mirage 3 is your lighting toolkit, a family of luminaires consisting of recessed, surface and suspended products with a varied choice of sizes, reflectors, optics and colours, designed to help you create the desired environment.



- Tuneable White on C165 variants



- Additional emergency variants (e.g., central battery)
- Additional controls integration (e.g., Organic Response passive node)
- Bezel colour change using wet spray
- Tuneable white on C79 and C110 variants
- Retrofit kits



- Product dimensional changes (e.g., bezel width change, overall diameter change)
- Bezel colour change via in-mould colour

Mirage 3

Surface/suspended

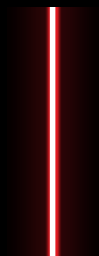
Mirage 3 is your lighting toolkit, a family of luminaires consisting of recessed, surface and suspended products with a varied choice of sizes, reflectors, optics and colours, designed to help you create the desired environment.



- Body colour (powder coat)



- Depth changes between 160mm and 290mm (diameter dependent)
- Central battery emergency option (diameter dependent)
- Alternative suspension options (e.g., braided cable, drop rods, conduit)
- Tuneable white variants (C175)
- Wireless control options



- Alternative diameters
- Bezel colour change via in-mould colour
- IP54 / IP65 variants
- Alternative body finish types (e.g., anodised / bare metal finish)

Scribe

Featuring innovative 360° diffuser technology, and uniting style with functionality, Scribe stands as a fully compliant solution tailored for the diverse needs of both Workspace and Education environments.



- End cap colour change using wet spray
- Integration of Air Control wireless module



- Addition of tuneable white
- Length changes between 600 and 1800 mm
- Diffuser optic changes (e.g., nano hex, full opal)
- Integration of alternative control sensors (similar size to Organic Response, e.g., ComD1)



- Integration of through wiring
- IP54 variant
- Alternative diffuser side colours (e.g., opaque, black)
- Wider variant (complete redesign and retool of product required)

Selene 2

Following on from the highly successful Selene, a product combining low energy technology and affordability, without compromising on quality, we bring you Selene 2.



- Output changes (within scope of boards and LEDs)



- Length changes
- Additional emergency variants (e.g., central battery)
- Additional controls integration (e.g., Casambi)
- Body colour change including end cap respray
- Tuneable white (downlight only)
- Diffuser material changes
- Infill length changes

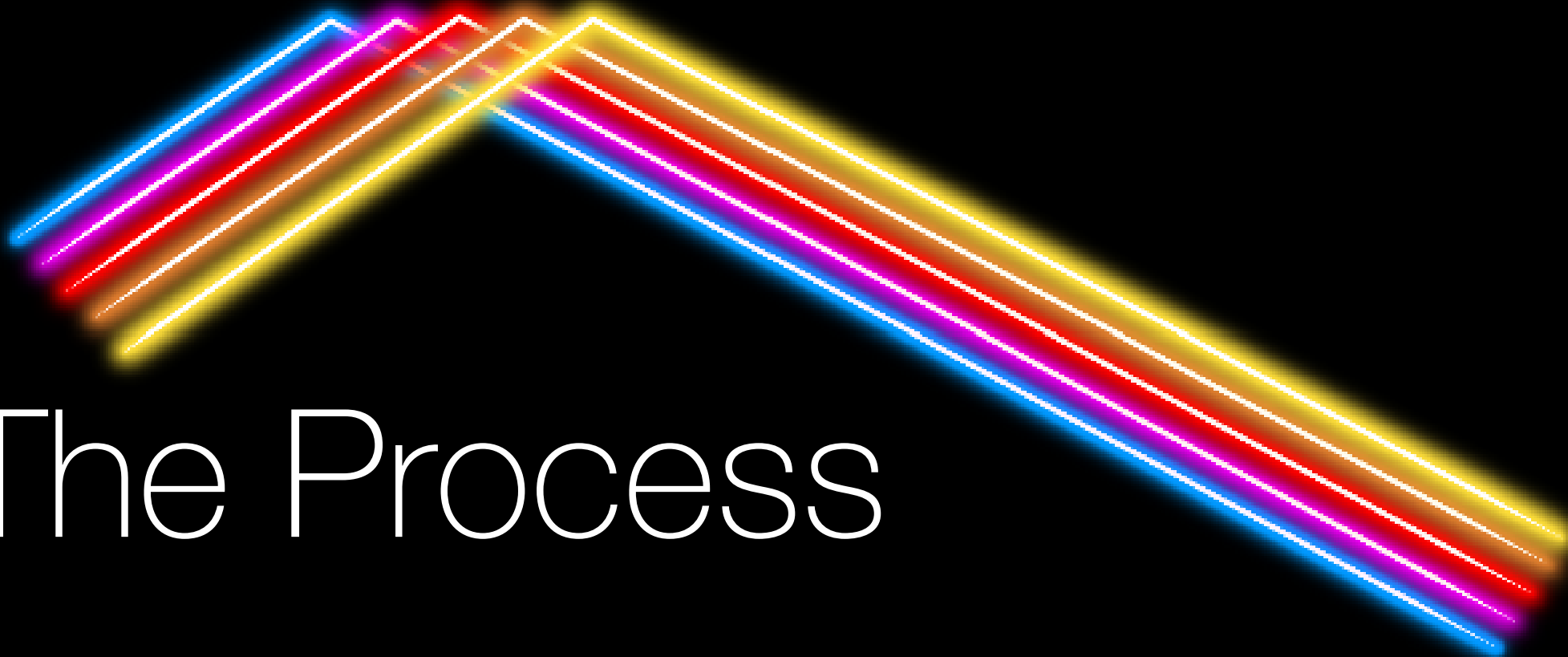


- Width changes



Case Study
Read More

Manchester Town Hall



The Process

1



Defining the brief together.

2



Producing Quotations and Sketches.

3



Developing Samples and Testing.

4



Delivering the Product Solution.

5



Supporting you after Delivery.



UK Head Office

Whitecroft Lighting Ltd
Burlington Street
Ashton-Under-Lyne
Lancashire
OL7 0AX
T +44 (0)161 330 6811
F +44 (0)161 331 5855
email@whitecroftright.com

London Office

Whitecroft Lighting Ltd
Suite 779 Salisbury
House
London Wall
Finsbury Circus
EC2M 5SQ
T +44 (0)161 330 6811
F +44 (0)161

Rep. Ireland Office

Fagerhult Ltd
F1 Calmount Park
Ballymount, Dublin 12
Ireland
T +353 (0)1 426 0200
F +353 (0)1 429 9606
info@fagerhult.ie
www.fagerhult.ie

