



## Kildean Business Park, Stirling

Organic Response® offers responsive wireless system for commercial office space

In 2022, consultants [Henderson Warnock](#) appointed Whitecroft Lighting to supply lighting along with its wireless [Organic Response®](#) control system to a new 77,500 sq ft building for finance company [M&G](#), at Kildean Business Park, Stirling, Scotland.

The brief was to ensure that the lighting complimented the building's clean modern lines whilst making valuable commercial space as flexible as possible.

A clean, wireless solution was suited to the largely glass structure, with traditional cables replaced by slicker sensor nodes, that connect with neighbouring luminaires, so all lighting can seamlessly respond to changing environmental conditions.



1,500

INSTALLED LUMINAIRES WITH ORGANIC RESPONSE®

BREEAM

RATING 'EXCELLENT'

77,500

SQUARE FT OF GRADE A OFFICE ACCOMMODATION



## Key Facts

Project Name	Kildean Business Park, Stirling
Location	Stirling
Completed	2021
Client	M&G
FM Provider	CBRE
Consultant	Henderson Warnock
Contractor	Emtec Building Services

Each sensor node contains a motion sensor, ambient light sensor, and infrared transmitter and receiver that allows seamless communication.

The system offers a range of benefits when compared to a wired or other wireless systems. Time and financial savings were made from not having to purchase or install a wired system. Aesthetically there were no cables to manage or hide, and the wireless light switches could be located on any surface.

Organic Response® also assists in making the space as flexible as possible, as the system doesn't require recommissioning if the layout changes.

To meet sustainability targets and help achieve a minimum [BREEAM](#) rating of 'Excellent', Whitecroft installed low-energy high-lifetime LEDs, while the light fittings contained replaceable modular units that lengthen the lifespan of the product and materials.

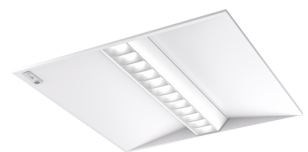
## Related Products



Oculus



Avenue Metro Direct/Indirect



Cascade Flex Vitality