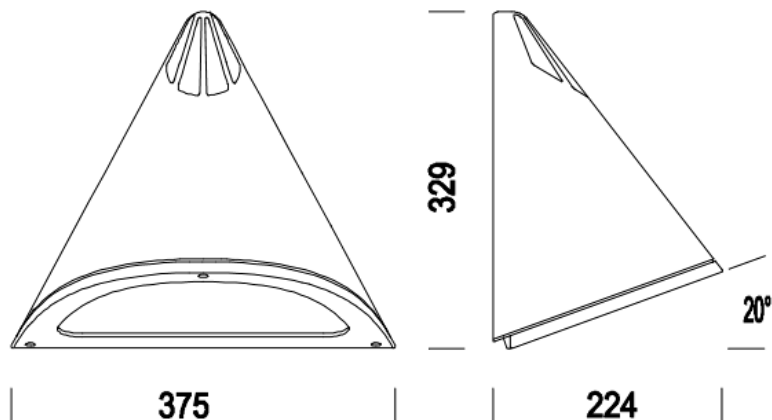


General Maintenance

Internal maintenance can be carried out by removing the glass and mounting frame as described overleaf.



TECHNICAL SUPPORT

Tel: 0161 331 5700

E-mail: technical@whitecroftlight.com

www.whitecroftlighting.com

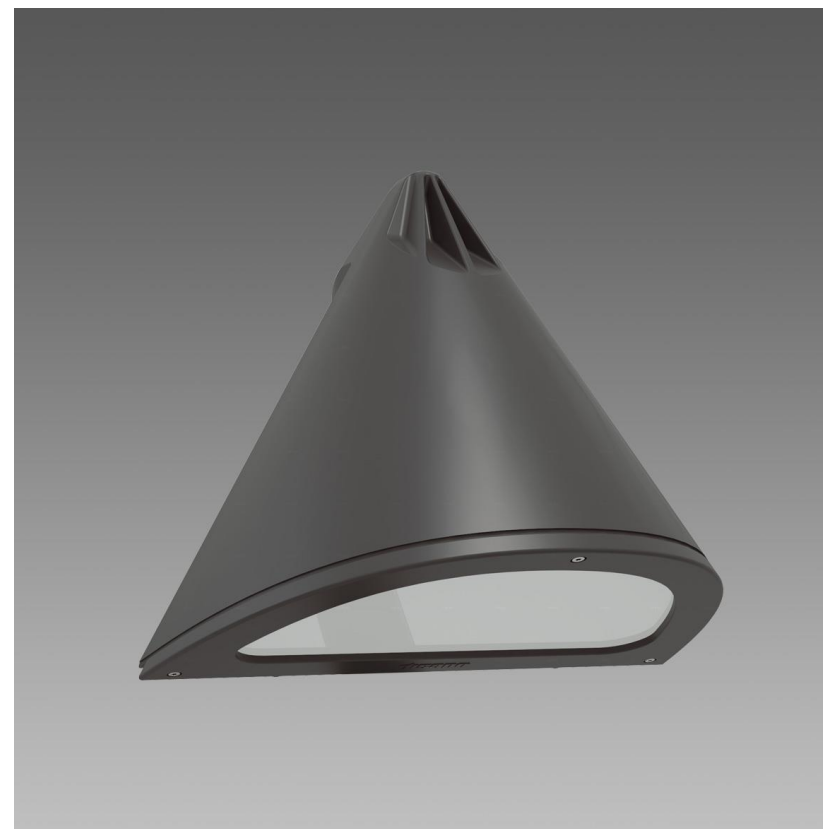
Please note: All images shown are for illustration purposes and should be used as a reference guide only.

GENERAL INFORMATION

1. A qualified electrician, in accordance with IEE wiring regulations, should carry out connection to mains wiring.
2. Ensure that the rated voltage and frequency requirements are compatible with the available mains supply.
3. Cleaning of reflectors and lenses should be carried out using clean, soft and lint free cloths and anti-static cleaning fluid.
4. Do not carry out high voltage insulation test, i.e. 500/1000v this may damage internal components.
5. For non-encapsulated products, for instance modules where the components can be touched, electro static discharge can damage sensitive components on the Printed Circuit Board (PCB) or LED. For this reason ESD precautions must be taken wherever these modules are handled or built in into the Luminaire.
6. When servicing luminaires on site, grounding of the service field engineer should be considered.
7. We recommend use of a high temperature copper paste on all screws that need to be accessed during maintenance process, this will prolong the life of the fixings and reduce the force required to remove the screws.
8. Some luminaires installed in outdoor environments may experience a build-up of internal condensation. This is due to a difference in temperature between inside and outside the luminaire which is quite common and acceptable under BSEN60598.



Spectre WX Installation Leaflet



PK/LEAF/SPECWX

Oct 2014 - Rev C



Whitecroft Lighting Limited

Burlington Street, Ashton-under-Lyne, Lancashire OL7 0AX
Telephone +44 (0)870 5 087 087 Facsimile: +44 (0)870 5 084 210

Registered No. 3848973 England

Registered Office: As above

SPECIFICATION

The Spectre WX is an exterior wall mounted product.

Height mm	Width mm	Depth mm	Weight kg
329mm	375mm	224	4.0

Suitable for ambient temperatures between:

- -20°C to +40°C (standard versions)
- -5°C to +25°C (emergency versions)

See www.whitecroftlighting.com for latest spec.

- Each Spectre WX luminaire is shipped in one package.
- Before commencing installation, check contents of carton to ensure that all components are present and in good condition.
- Wall fixings are not supplied with this luminaire.

Package contains:

- 1) Main body

INSTALLATION SEQUENCE

In order to fit this luminaire, the correct sequence of assembly must be observed.

During installation make sure the power is completely isolated from the mains supply.

Refer to general information overleaf before installation.

1. Remove the fitting from its packaging.
2. Unscrew the 3 off screws from the glass retaining frame using a 3mm Allen key (fig 1). Screws are retained by washers and should remain in the frame.
3. Remove the geartray by unscrewing 2 off screws from the back edge. Again, screws are retained to the geartray with washers. Place the geartray safely to one side while installing the luminaire body.
4. Remove 4 off M6 nyloc nuts from within the body and free the mounting plate.
5. Fix the plate to the chosen mounting surface using appropriate fixings (by others). Ensure that it is firmly fixed and well aligned. (fig 2)

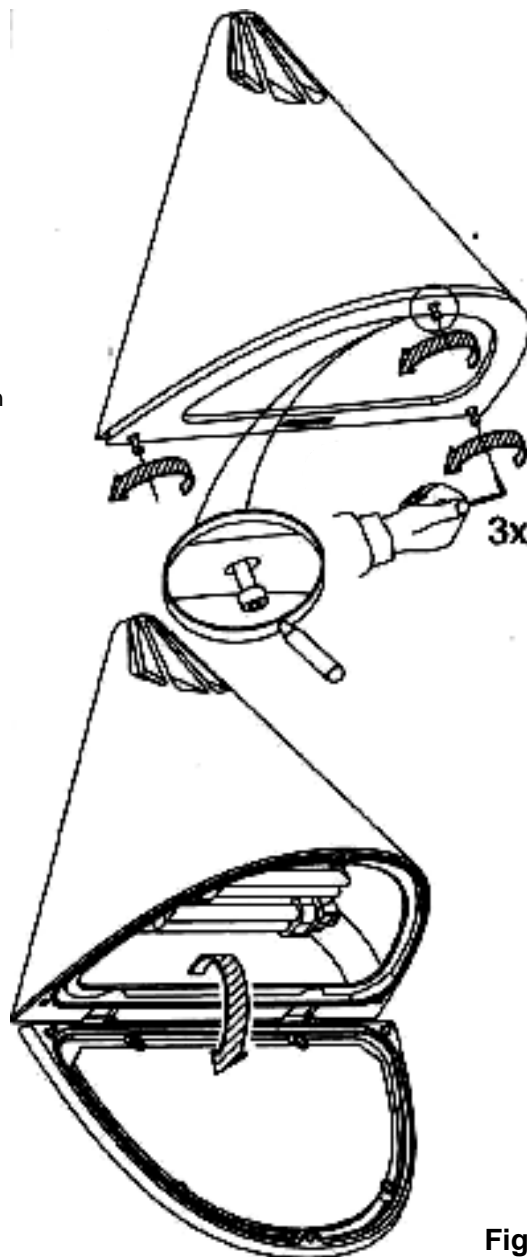


Fig. 1

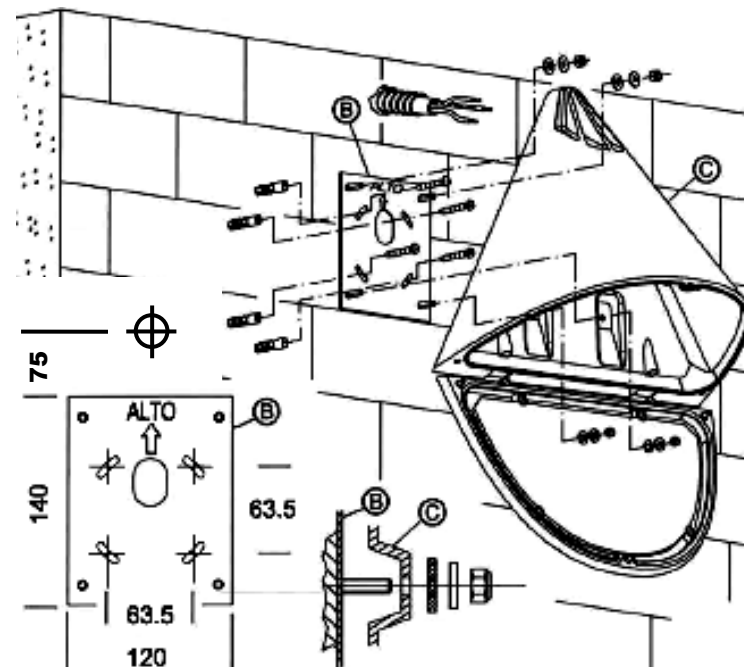


Fig. 2

6. Pass the supply flex through the grommet in the top/rear of the body. Flex max - Ø12mm, 1.5mm², 4-core (for emergency luminaires)
7. Refit the luminaire body onto the mounting plate studs. The body should always illuminate downwards – not for use as an uplighter. Ensure that the washers are correctly refitted and tighten nuts to secure the body.
8. Make electrical connections to the terminal block.
9. If the luminaire is equipped with an emergency inverter, ensure that the battery connection is made at this stage.
10. Refit the geartray/LED plate.
11. Ensuring that the sealing gasket is free from debris, refit the glass diffuser/frame. Tighten screws to 1.2nM max.
12. Installation is complete.