

General Maintenance

To access the inside of the luminaire you will need to remove all 4 screws with an Allen key. Lift the Top of the luminaire off the main body, after this you can perform general maintenance. Then reverse the process to put the cover back.

GENERAL INFORMATION

- 1) A qualified electrician, in accordance with IEE wiring regulations, should carry out connection to mains wiring.
- 2) Ensure that the rated voltage and frequency requirements are compatible with the available mains supply.
- 3) Cleaning of reflectors and lenses should be carried out using clean, soft, lint free cloths and anti-static cleaning fluid
- 4) Do not carry out high voltage insulation test, i.e. 500/1000v this may damage internal components.
- 5) We recommend use of a high temperature Copper Paste on all screws that need to be accessed during maintenance process, this will prolong the life of the fixings and reduce the force required to remove the screws.
- 6) Some luminaires installed in outdoor environments may experience a build-up of internal condensation. This is due to a difference in temperature between inside and outside the luminaire which is quite common and acceptable under BSEN60598.

TECHNICAL SUPPORT

Tel: 0161 331 5700

e-mail: technical@whitecroftlight.com

www.whitecroftlighting.com

Please note: All images shown are for illustration purposes and should be used as a reference guide only.



Spectre WR Installation Leaflet



PK/LEAF/SPEC

November 2013 - Rev A



Whitecroft Lighting Limited

Burlington Street, Ashton-under-Lyne, Lancashire OL7 0AX
Telephone +44 (0)870 5 087 087 Facsimile: +44 (0)870 5 084 210

Registered No. 3848973 England

Registered Office: As above

SPECIFICATION

The Spectre WR is an exterior all mounted surface product available in graphite grey.

Height mm	Diameter mm	Weight Kg
225	300	4.5

Each Spectre WR luminaire is shipped in two packages:

Before commencing installation, check content of carton to ensure that all components are present and in good condition.

- 1) Main body
 - 2) Wall bracket
 - 3) Wall Bracket Mounting screws (x4)
- Make sure you have suitable wall plug and screws (not provided)

INSTALLATION SEQUENCE

In order to fit this luminaire, the correct sequence of assembly must be observed. During installation make sure the power is completely isolated at the mains.

1. Remove the fitting from its packaging along with the wall mounting bracket and the wall mounting screws.
2. Take your wall mounting kit and unscrew the 4 nuts on the bracket using a 10 mm nut driver, (Fig 3).
3. Take the back plate off the wall mount and screw into wall using wall plugs, (Fig 2).
4. Take your 3 core cable (diameter= 9:12mm, 1.5 mm, 2 Core rubber Insulated) and push through the back of the wall mounting bracket and up through the hole at the top of the bracket. Make sure you have ample cable for wiring, (Fig 3 & 2).
5. Place the bracket onto the back plate using a 10mm nut driver to re attach the nuts to secure the bracket to the back plate, (Fig. 3).

Fig. 4

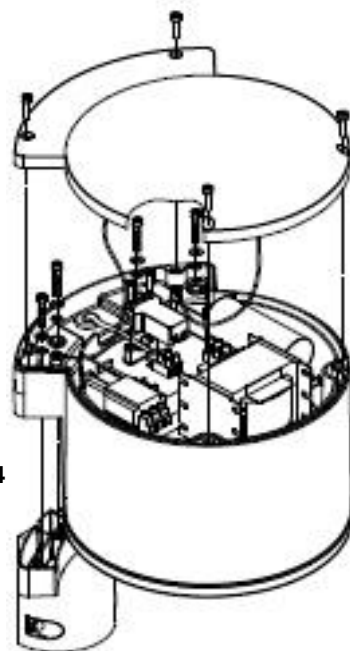


Fig. 5



Fig. 1

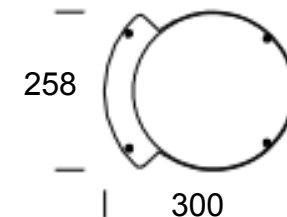
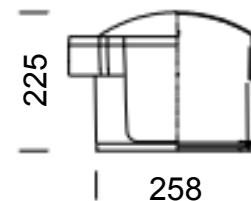


Fig. 2

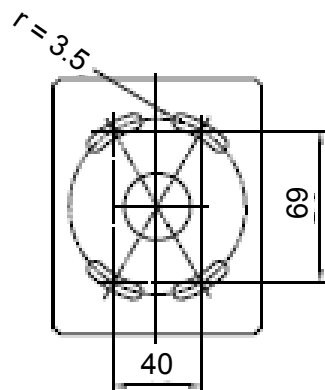
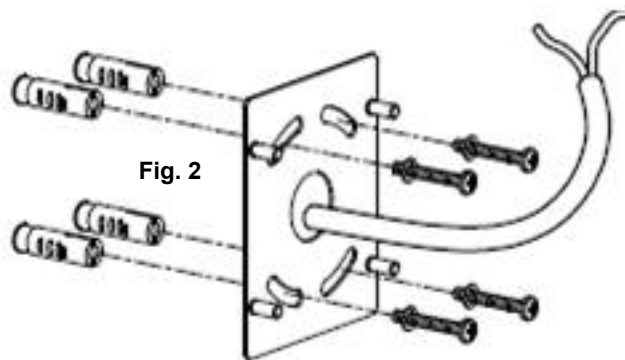


Fig. 3

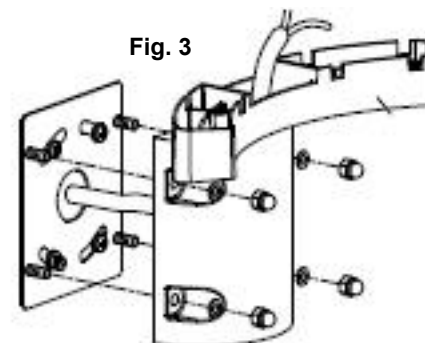
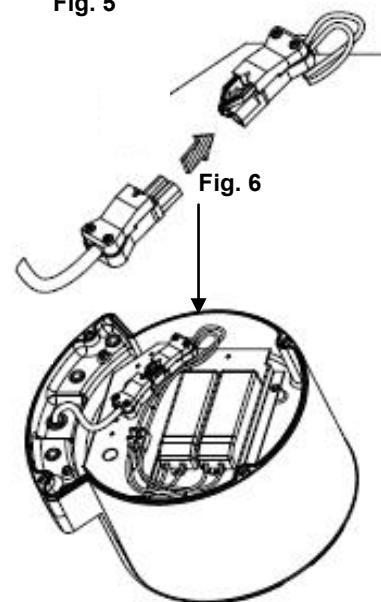


Fig. 6



6. Unscrew the lid of the fitting using a size 4mm Allen key, (Fig 4).
7. Unclip the connection block and unscrew the cable restraints.
8. Wire your 2 core cable into the connection block and re-fastens the cable restraints, Make sure the cable is secure in the connection block, (Fig 5).
9. Reconnect the connection block, (Fig 6).
10. Place the fitting back on the top of the wall mounting bracket, (Fig 4).
11. Using the mounting screws provided screw down the fitting to the bracket, (Fig 4).
12. Replace the lid of the fitting, making sure that the seal is correctly sealed and is clean so that there is no damage, (Fig 4),
13. Ensure that the seal is intact and fully working.
14. Tighten all the screws using a force of 8 Nm so that the seal is correctly sealed and that the gland is clear of all debris.