

## GENERAL INFORMATION

- 1) A qualified electrician, in accordance with IEE wiring regulations should carry out connection to mains wiring.
- 2) Ensure that the rated voltage and frequency requirements are compatible with the available mains supply.
- 3) Cleaning of reflectors and lenses should be carried out using clean, soft and lint free cloths and anti-static cleaning fluid
- 4) Do not carry out high voltage insulation test, i.e. 500/1000v this may damage internal components.

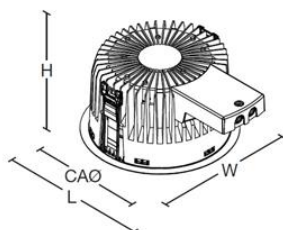
## PRODUCT DETAILS


An LED downlight with a functional, high light output of 1100-3000Lm and the luminaire has a 50,000h average lifetime. The product includes fully integrated thermal protection and a technical reflector specifically designed for LEDs to focus the light where it is most needed.

## INSTALLATION VIDEO

<https://vimeo.com/138846888>

## DIMENSIONS



Version	L	W	H	CAØ	KG	KG 
Compact	232	183	100	165	1.18	2.7
Comfort	232	183	137	165	1.35	2.9

## TECHNICAL SUPPORT

Telephone: 0161 331 5700

E-mail: [technical@whitecroftlighting.com](mailto:technical@whitecroftlighting.com)

<http://www.whitecroftlighting.com/>

Whitecroft  
lighting

# Mirage LED Comfort / Compact

## Recessed LED Installation Instructions



PK-LFTMIRAGELED-P

October 2019 – Rev 4



**Whitecroft Lighting Limited**

Burlington Street, Ashton-under-Lyne, Lancashire OL7 0AX  
Telephone +44 (0)161 330 6811 Facsimile: +44 (0)161 331 5855  
[www.whitecroftlighting.com](http://www.whitecroftlighting.com)

Registered No. 3848973 England

Registered Office: As above

## SPECIFICATION

<b>Lamp types</b>	LED DLM –1100 & 2000 lumen (3000K & 4000K) & 3000lm (3000K & 4000K)
<b>Materials</b>	Aluminium casting and PC reflector ring (white RAL 9003)
<b>Supply</b>	240V
<b>Power</b>	1100 lumens (3000K / 4000K – 10 W) 2000 lumens (3000K / 4000K – 17.7 W) 3000 lumens (3000K / 4000K – 25.8 W)
<b>1 Operating temp</b>	0°C to 25°C
<b>Connection</b>	0.5mm <sup>2</sup> to 1.5mm <sup>2</sup>
<b>Ingress protection</b>	Compact / Comfort – IP44 ( <i>Rated from front face</i> ) IP64 can be achieved with disc attachment. <b>Note:- IP64 disc not suitable for 3000 lumen version.</b> (For more details contact the technical department).

- For ceiling thickness:  
- 5mm to 50mm, note if a 5mm soft ceiling tile is being used, it is recommended that a separate pattress is to be used in addition (Whitecroft Lighting part reference - MLA-PAT)

## INSTALLATION DETAILS (FIXED & DALI OUTPUT)

Firstly, unpack the luminaire head and also unpack the driver which is supplied separately.

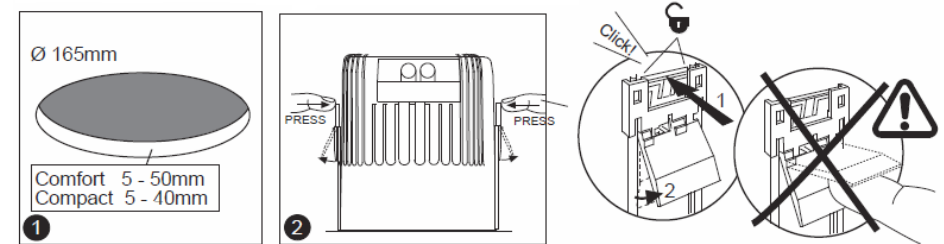
## CONNECTION

1. Access the wire connections by releasing the cable restraints on driver
2. Connect the driver cable into terminals labelled LED +/-.  
**Please Note: Red wire is '+' and White wire is '-'.**
3. Strip the ends of the mains cable to the correct length to ensure that the outer sheath will be clamped by the restraints. Connect the mains input to the live 'L' and neutral 'N' terminals and Dali pair when applicable. Where the PRI is labelled on the driver as '~' these will be polarity free, i.e. live and neutral can be connected either way round. (Note: - the luminaire and driver combination is CLASS II so no earth is required).
4. Replace and lock covers by clamping onto outer sheath only.

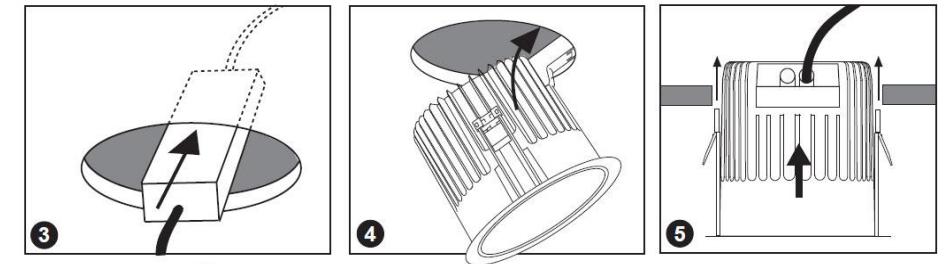
## INSTALLATION DETAILS

**NB: - TO AVOID MARKING THE MATT REFLECTOR IT IS ADVISED THAT THE PRODUCT IS INSTALLED WITH THE DUST PROTECTOR IN PLACE AND ONLY REMOVED ONCE INSTALLATION IS COMPLETE. THE DUST PROTECTOR CAN BE REMOVED BY PULLING THE ELASTIC FROM AROUND THE BEZEL.**

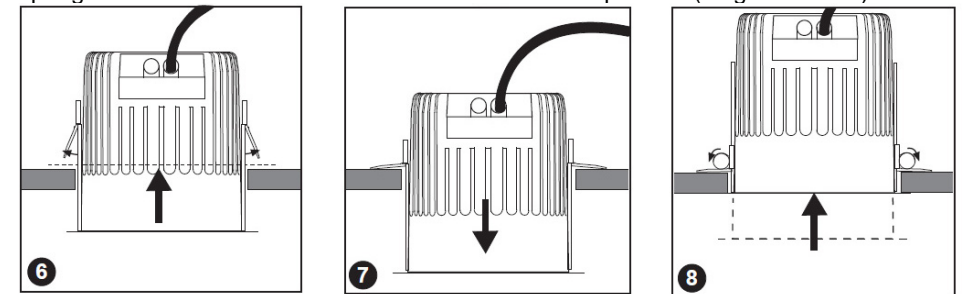
1. Cut a ceiling aperture to 165 mm diameter (+/- mm).
2. Activate the mounting springs by pressing the area illustrated in diagram 2. A click should be heard and the spring levers will rise into the 'mount' position. **Be very careful not to touch the spring while it is in this state.**



3. Feed the driver unit followed by the luminaire unit into the ceiling aperture until it is straight and the spring levers are beyond the ceiling (diagrams 3 – 6).

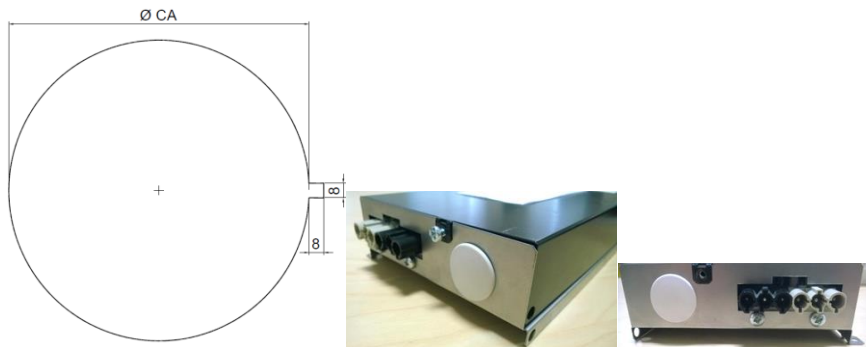


4. Gently pull the luminaire unit down, keeping it level and this will fully activate the mounting springs and the unit will level itself and be secured into position (diagrams 6 – 8).



## FITTING INTO THE CEILING – EMERGENCY VARIANTS.

Please note that with the standard 3 hour emergency an additional cut (of approximately 8 mm square) needs to be added to the standard 165 mm aperture to account for the LED indicator head that is fitted to the luminaire. This is illustrated below and is best achieved using a utility knife.

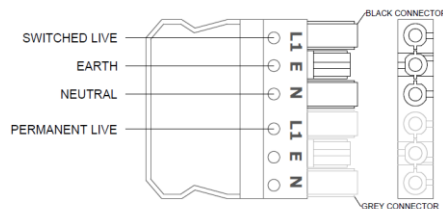


The external 6 way connector plug should be attached to the emergency box and then the whole assembled unit should be then fed up through into the ceiling aperture following the standard installation procedure (see diagram **A** below for wiring details).

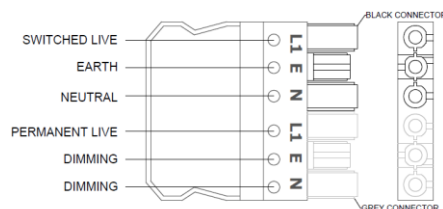
Please ensure that the LED indicator head is positioned correctly in the aperture as if it is not this may cause damage to the LED indicator head.

**A**

### EMERGENCY STANDARD (4 CORE CABLE)



### EMERGENCY DIMMING (6 CORE CABLE)



## POSITIONING INFORMATION

	Without insulating material (mm)		With insulating material (mm)		(mm)		(mm)		(mm)		
	A	B	A	B	C	D	E	F	G	H	
Compact 1100 lm	400	250	450	300	800	450	100 min	50 min	0	225 min	
Compact 2000 lm	450	450			800	450	100 min	50 min	0	225 min	
Compact 3000 lm	450	450			800	450	100 min	50 min	0	225 min	
Comfort 1100 lm	400	250	450	300	800	450	100 min	50 min	0	225 min	
Comfort 2000 lm	450	450			800	450	100 min	50 min	0	225 min	
Comfort 3000 lm	450	450			800	450	100 min	50 min	0	225 min	

Standard

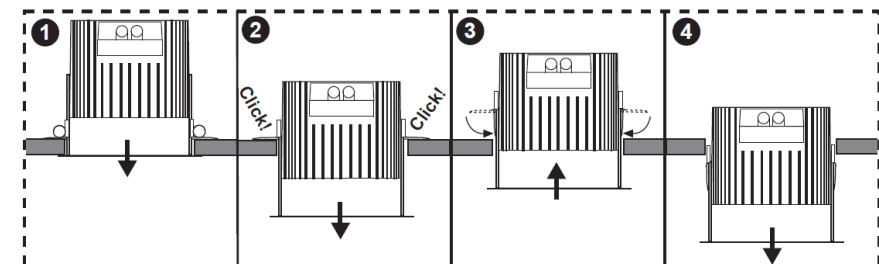
EM variants

Box space can be covered with insulating see table A-B



## REMOVAL PROCEDURE

To remove the luminaire pull the unit down (keeping level) until a 'click' is heard from both springs (1 & 2). This de-activates the spring mechanism. Push the luminaire back into the ceiling to allow the spring levers to drop back down (3). The luminaire will now pass through the ceiling aperture (4).



## INSTALLATION DETAILS - EMERGENCY VARIANTS

Standard 3 hour emergency, Standard 3 hour emergency (with Dali driver) and COMEPS.

The package should include the luminaire attached to the emergency driver, please note that the standard driver will always be supplied separately.



## CONNECTION AND WIRING

On the separately supplied driver access the connection points by following either;

**INSTALLATION DETAILS (FIXED OUTPUT) page 3**

**INSTALLATION DETAILS (DALI) page 4**

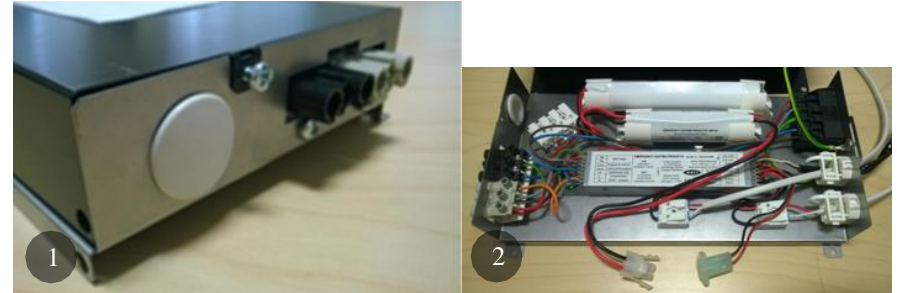
**Please note that for fixed output emergency the red and white DALI wires and earth wire should be cut away from the 5 pole connector / cable assembly**

Then connect the corresponding GST socket into the emergency box.



## CONNECTION AND WIRING EMERGENCY VARIANTS

1. To connect the emergency batteries, remove the lid from the box by unscrewing it from the side of the box (diagram 1). Place the two connectors' together (diagram 2) and screw the box lid back into position.
2. The inverter housing must be fixed to a solid construction.  
**Please note – do not connect the batteries until there is a permanent unswitched supply in place.**



When using the COMEPS version of the emergency luminaire with a DALI driver, the emergency luminaire is supplied suitable for a combination of DALI broadcast dimming and DALI addressable emergency which require two separate DALI pairs (the dimming pair via the 6 way plug and emergency coms hard wired to the block inside the emergency box).

However if you are using a fully DALI addressable system i.e. both dimming/control and emergency test via the same DALI pair, then use the links provided in the 4 way terminal block to connect the 2 DALI pairs together. The DALI feed will then be wired via the 6 way plug.

**The assembled unit should look the same as below.**

**Please take care to connect the batteries or address the link wires for Dali / dimming requirements within the remote box before installing**

