

GENERAL INFORMATION

- 1) A qualified electrician, in accordance with IEE wiring regulations should carry out connection to mains wiring.
- 2) Ensure that the rated voltage and frequency requirements are compatible with the available mains supply.
- 3) Cleaning of reflectors and lenses should be carried out using clean, soft and lint free cloths and anti-static cleaning fluid
- 4) Do not carry out high voltage insulation test, i.e. 500/1000v this may damage internal components.

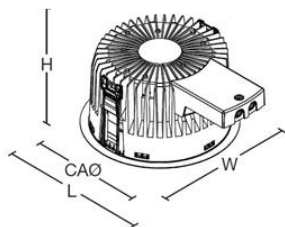
PRODUCT DETAILS

An LED downlight with a functional, high light output of 1800Lm and the luminaire has a 50,000h average lifetime. The product includes fully integrated thermal protection and a technical reflector specifically designed for LEDs to focus the light where it is most needed.

INSTALLATION VIDEO

<https://vimeo.com/138846888>

DIMENSIONS



Version	L	W	H	CAØ	KG	KG	EM
Comfort	232	183	137	165	1.35	2.9	

TECHNICAL SUPPORT

Telephone: 0161 331 5700

E-mail: technical@whitecroftlight.com

<http://www.whitecroftlighting.com/>



Whitecroft Lighting Limited

Burlington Street, Ashton-under-Lyne, Lancashire OL7 0AX
Telephone +44 (0)161 330 6811 Facsimile: +44 (0)161 331 5855
www.whitecroftlighting.com

Registered No. 3848973 England

Registered Office: As above

Whitecroft
lighting

Mirage LED Tunable White

Recessed LED Installation Instructions



PK-LFTMIRAGELEDTW

October 2019 – Rev 1



Whitecroft Lighting Limited

Burlington Street, Ashton-under-Lyne, Lancashire OL7 0AX
Telephone +44 (0)870 5 087 087 Facsimile: +44 (0)870 5 084 210
www.whitecroftlighting.com

Registered No. 3848973 England

Registered Office: As above

SPECIFICATION

Lamp types	LED 2700k – 6500k
Materials	Aluminium casting and PC reflector ring (white RAL 9003)
Supply	240V
Power	1800 lumens (28 W)

Operating temp	0°c to 25°c
Connection	0.5mm ² to 1.5mm ²
Ingress protection	IP44

- For ceiling thickness:
- 5mm to 50mm, note if a 5mm soft ceiling tile is being used, it is recommended that a separate pattress is to be used in addition (Whitecroft Lighting part reference - MLA-PAT)

INSTALLATION DETAILS

Firstly, unpack the luminaire head and also unpack the driver which is supplied separately.

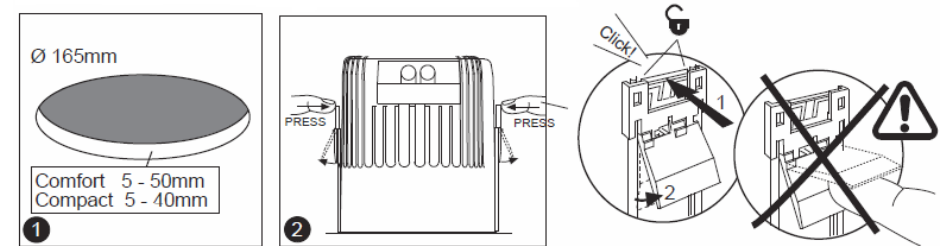
CONNECTION

1. Access the wire connections by releasing the cable restraints on driver
2. Strip the ends of the mains cable to the correct length to ensure that the outer sheath will be clamped by the restraints. Connect the mains input to the live 'L' and neutral 'N' terminals and Dali pair when applicable. Where the PRI is labelled on the driver as '∼' these will be polarity free, i.e. live and neutral can be connected either way round. (Note: - the luminaire and driver combination is CLASS II so no earth is required).
3. Replace and lock covers by clamping onto outer sheath only.

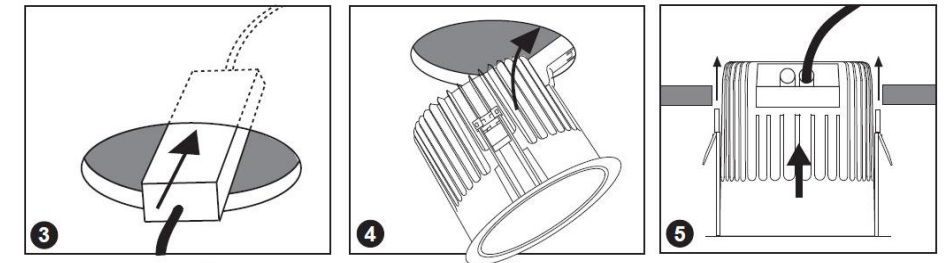
INSTALLATION DETAILS

NB: - TO AVOID MARKING THE MATT REFLECTOR IT IS ADVISED THAT THE PRODUCT IS INSTALLED WITH THE DUST PROTECTOR IN PLACE AND ONLY REMOVED ONCE INSTALLATION IS COMPLETE. THE DUST PROTECTOR CAN BE REMOVED BY PULLING THE ELASTIC FROM AROUND THE BEZEL.

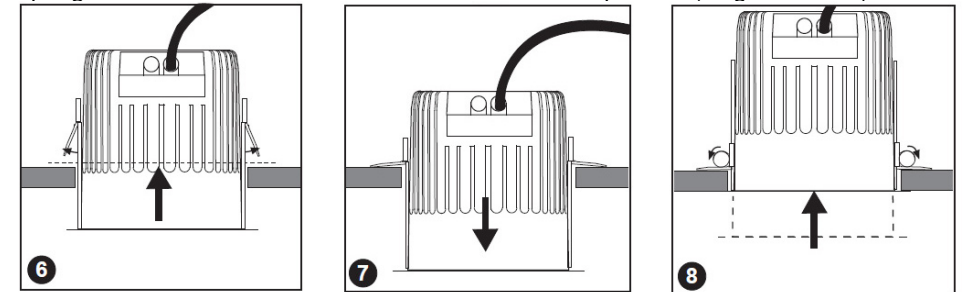
1. Cut a ceiling aperture to 165 mm diameter (+/- mm).
2. Activate the mounting springs by pressing the area illustrated in diagram 2. A click should be heard and the spring levers will rise into the 'mount' position. **Be very careful not to touch the spring while it is in this state.**



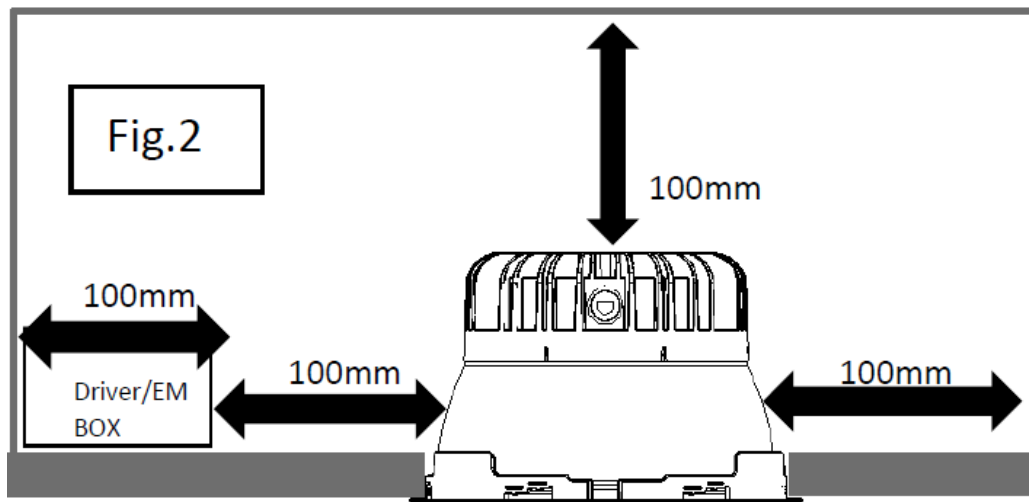
3. Feed the driver unit followed by the luminaire unit into the ceiling aperture until it is straight and the spring levers are beyond the ceiling (diagrams 3 – 6).



4. Gently pull the luminaire unit down, keeping it level and this will fully activate the mounting springs and the unit will level itself and be secured into position (diagrams 6 – 8).



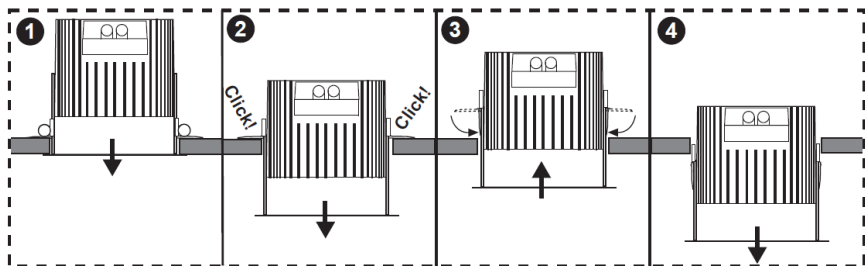
POSITIONING INFORMATION



Please leave space around the product as above.

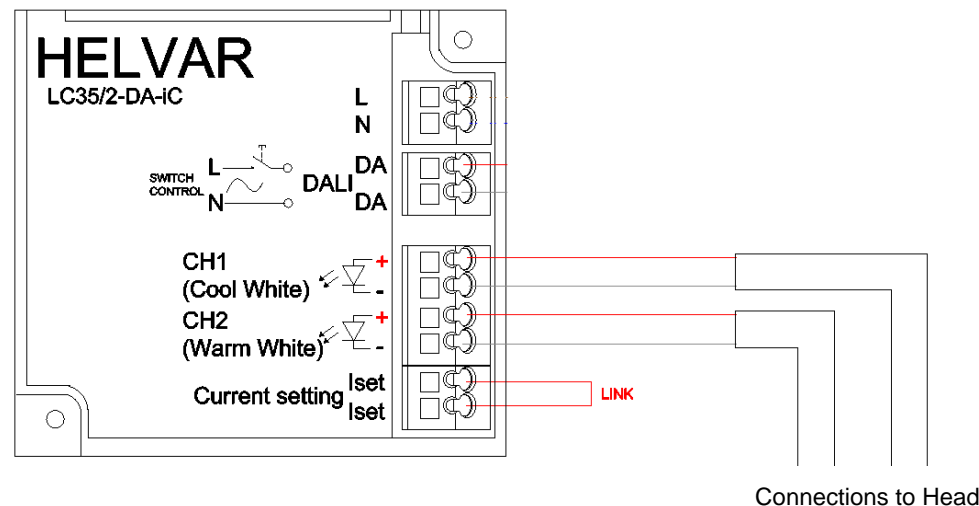
REMOVAL PROCEDURE

To remove the luminaire pull the unit down (keeping level) until a 'click' is heard from both springs (1 & 2). This de-activates the spring mechanism. Push the luminaire back into the ceiling to allow the spring levers to drop back down (3). The luminaire will now pass through the ceiling aperture (4).



CONNECTION AND WIRING

On the supplied driver, access the connection points by following.



Please note: this product requires DALI type 8 controls in order to output the tunable colour control. (Supplied separately or by others)

Please contact our controls department on 0161 311 5700