

TECHNICAL SUPPORT
 Tel: 0161 331 5700
 E-mail: technical@whitecroftlight.com
www.whitecroftlighting.com



Marine SD Installation Leaflet



PK/LEAF/MARINSD

May 2017 - Rev A



Whitecroft Lighting Limited

Burlington Street, Ashton-under-Lyne, Lancashire OL7 0AX
 Telephone +44 (0)870 5 087 087 Facsimile: +44 (0)870 5 084 210

Registered No. 3848973 England
 KB

Registered Office: As above

GENERAL INFORMATION

- 1) A qualified electrician, in accordance with IEE wiring regulations, should carry out connection to mains wiring.
- 2) Ensure that the rated voltage and frequency requirements are compatible with the available mains supply.
- 3) Cleaning of reflectors and lenses should be carried out using clean, soft and lint free cloths and anti-static cleaning fluid
- 4) Do not carry out high voltage insulation test, i.e. 500/1000v this may damage internal components.
- 5) We recommend use of a high temperature Copper Paste on all screws that need to be accessed during maintenance process, this will prolong the life of the fixings and reduce the force required to remove the screws.
- 6) Some luminaires installed in outdoor environments may experience a build-up of internal condensation. This is due to a difference in temperature between inside and outside the luminaire which is quite common and acceptable under BSEN60598.

General Maintenance

To access the inside of the luminaire you will need to remove the 3 screws on the top of the luminaire using a 4mm allen key. Then lift front of the luminaire off so that you can get access to the inside of product. The process can be reversed to put the cover back on.

Specification

The Marine SD is a floor adjustable fitting for exterior use. The product consumes 21W and has an output of 2300 lumens. Not suitable for road use vehicles may cause damage to luminaire.

Height mm	Width mm	Weight Kg
200mm	245mm	4.16

Connection up to 2.5mm²

Cable Diameter :- 5mm-13mm (Supplied connector not suitable for armoured cable)

INSTALLATION SEQUENCE

In order to fit this luminaire, the correct sequence of assembly must be observed.

1. Remove the fitting from its packaging.
2. Unscrew the front of the fitting using a 4mm Allen Key.
3. Lift the face off the product by removing the 2 pozi screws. Making sure the glass and the front face do not get damaged, (Fig 1).
4. Lift the fitting out of the sleeve and put the sleeve into a hole at least 500mm deep and 345mm wide and cement it in. Ensure a minimum of 300mm depth of gravel below the housing and test for good drainage.
5. Take the cable and wire into either the IP Rated T-Connector or your IP rated connection block. (Fig 2).
6. Wire the cable from the product into other side of connection block.
7. Place the fitting back into the sleeve
8. Using a screw driver adjust the reflector to the desired angle between 0 and 15deg.
9. Ensure there is no moisture inside of luminaire before closing, run the fittings with the cover removed for 30-40 minutes before closing to ensure the inside is completely dry. (Fig. 3) Ensure the seal is clear Tighten screws in sequence a few turns at a time.
10. Put the glass and the front face on and re-tighten the front screws making sure that it is in correct. Check product is correctly sealed. (Do not use power tools).

Each Marine SD is shipped in one single package:
Before commencing installation, check content of the carton to ensure that all components are present and in good condition.

1. Main Body/ luminaire
2. Housing (connected to body)
3. IP68 Plug

Fig. 1

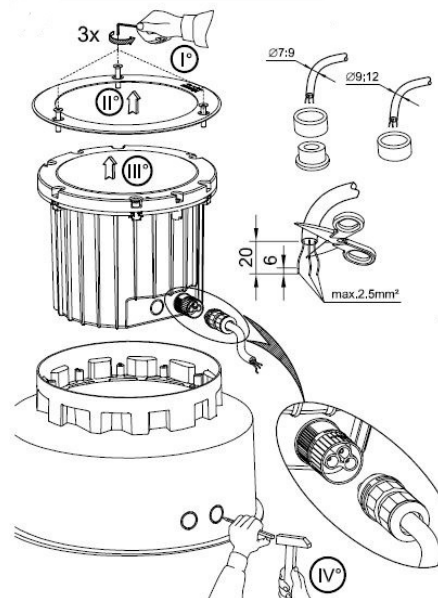
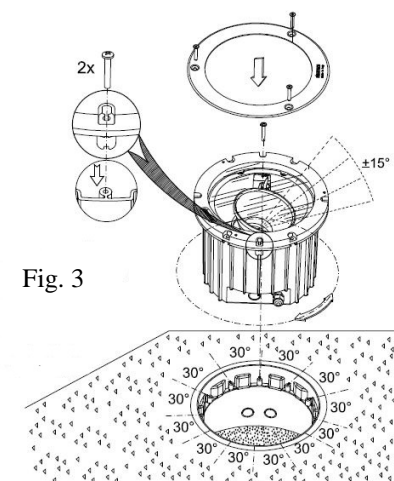
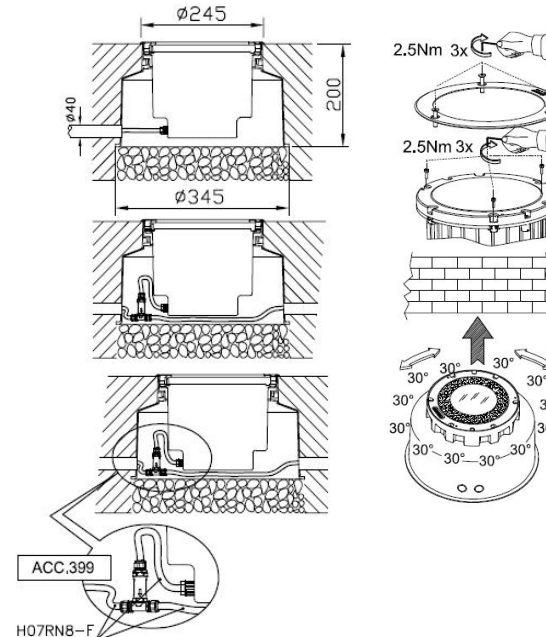
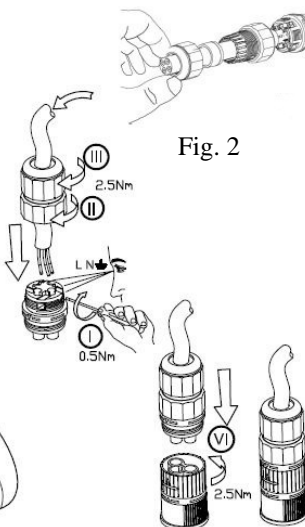


Fig. 2



Please note: All images shown are for illustration purposes and should be used as a reference guide only.